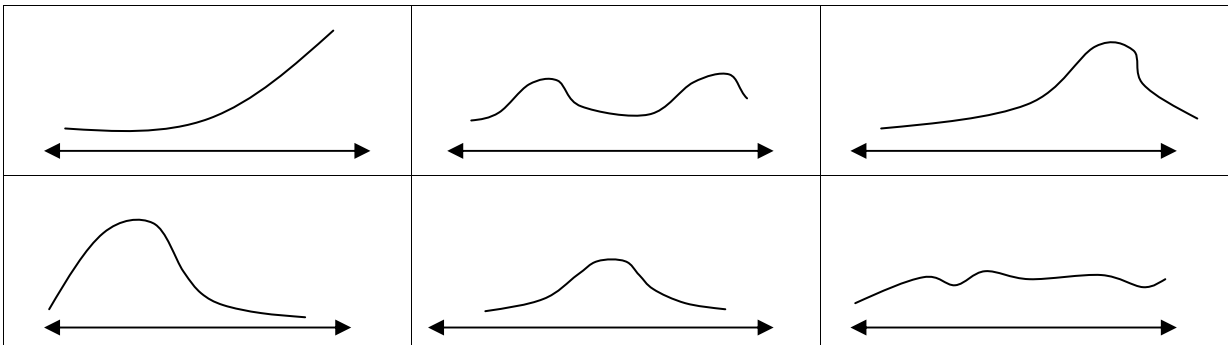
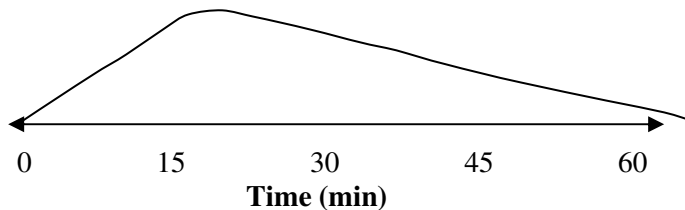


Properties of Common Distributions

- State whether each of the following is true or false.
 - In a normal distribution curve, the mean, median, and mode are all at the same place.
 - The mean is positioned to the right in a positively skewed distribution.
 - A bimodal distribution graph has two modes.
 - In a normal distribution, the majority of scores fall within ± 1 standard deviations.
 - If scores are clustered at either end of the distribution, it is known as a quadratic distribution.
- Describe how you can recognize a positively or negatively skewed frequency distribution graph.
- Identify the following distributions as positively skewed, negatively skewed, normal, exponential, bimodal, or none of these.



- Victims in severe pain are given a pain-relieving drug to help reduce the pain. Over time, the drug wears off. If the amount of drug in a person's system is measured over 15-min intervals, the distribution would be similar to the graph below.



- Identify the type of distribution.
- Estimate the time required for the victim to experience maximum pain relief.