

TI 83 EMULATOR DOWNLOAD INSTRUCTIONS

1. Go to the website: “ **www.zophar.net/ti.html** ”.

2. Scroll down to: “ **TI-83 Plus
Development
Tools** ”

Click on: “ **Download** ”.

3. Close the previous window.

Click on: “ **Save** ”.

4. Use the pull-down menu to click on: “ **Desktop** ”.
Click on: “ **Save** ”.

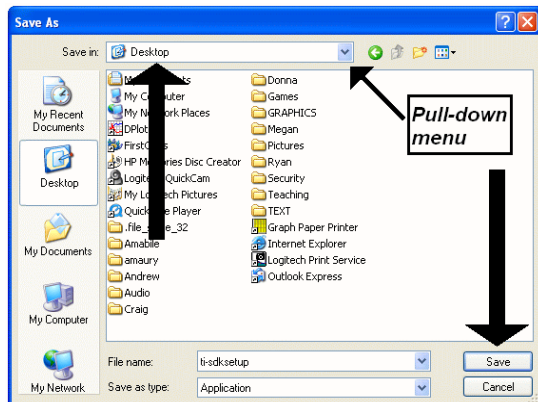
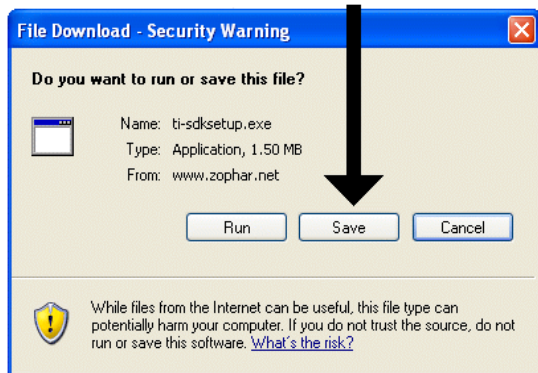
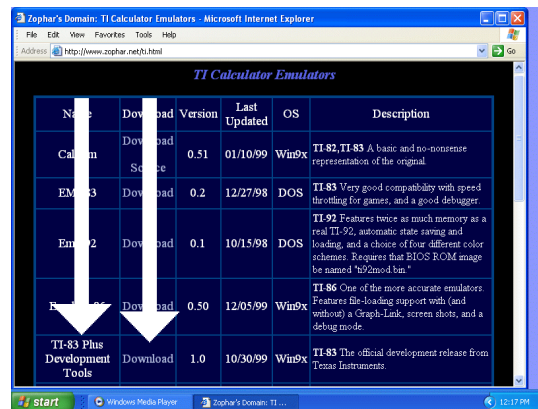
It will take about a minute to download the file.
An icon (below right) will appear on the desktop

Click on: “ **Close** ” to close the window,
(unless it closed automatically after the download).

5. Double click on the icon.

Execute the program called: “ **ti-sdksetup** ”
and follow the set-up instructions.

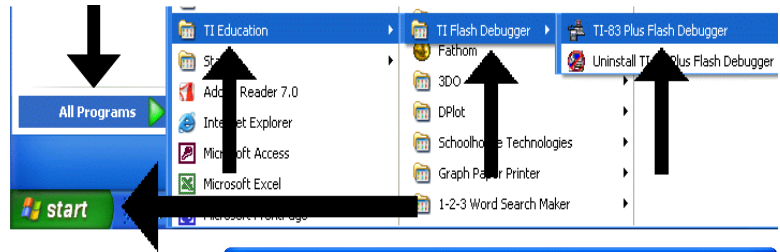
- ▶ **Run**
- ▶ **Next**
- ▶ **Yes**
- ▶ **Next**
- ▶ **Next**
- ▶ **Next**
- ▶ **Next**
- ▶ **Restart my computer now**
- ▶ **Close**
- ▶ **Yes** (Restart the computer now.)



ti-sdksetup

6. Once your computer restarts, click on:

- **Start**
- **All Programs**
- **TI Education**
- **TI Flash Debugger**
- **TI-83 Plus Flash Debugger**

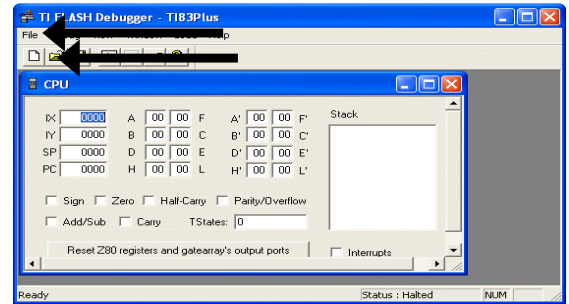


7. Click on: “ **File** ”.

Click on: “ **New** ”.

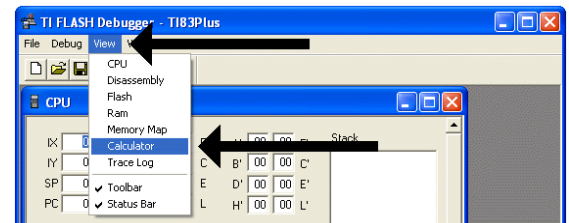
(Or click on the white page icon under the “ **File** ” button.)

The screen will now appear as at right.



8. Click on: “ **View** ”.

Click on: “ **Calculator** ”.



9. Press the “ **F5** ” button on the keyboard’s top row.

If the calculator is not on, then move the mouse over the “ **On** ” button on the calculator image and left click.

Downsize the previous window.

Calculator image functions like the actual TI-83.

Left click on the buttons with the mouse.

Use directional arrows on the calculator image.

To close, “ **X** ” off the calculator and previous page.

Do not save changes.

To clear data:

- **Press “ 2nd ”**
- **Press “ + ”**
- **Press “ 7 ”**
- **Press “ 1 ”**
- **Press “ 2 ”**

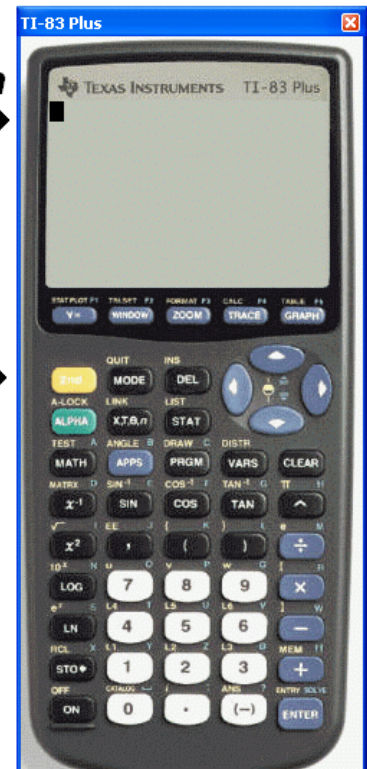
To print the screen:

- Press the “ **Print Screen** ” key above the “ **Delete** ” key on your keyboard.
- Open the “ **Paint** ” program.
- Click on: “ **Edit** ”.
- Click on: “ **Paste** ”.
- Crop the image as necessary, copy, and then paste into a word document.

Flashes when on



“On” button



* Remember to switch the **MODE** from **Radians** to **Degrees** if performing Trigonometry functions in degrees.